



**Facility Name:** Queens Court Accommodation

**Facility Type:** Apartments

**Facility Address:** 167-173 Sheridan Street, Cairns

**Phone:** 07 4051 7722 – within Australia  
+61 7 4051 7722 – International

**Fax:** 07 4051 4811 – within Australia  
+61 7 4051 4811 – International

**Email:** [sales@queenscourt.com.au](mailto:sales@queenscourt.com.au)

**Website:** [www.queenscourt.com.au](http://www.queenscourt.com.au)

**Recommended:** Recommended for ambulant and wheel chair users with a high level of function.

**Room numbers:** Two accessible rooms no interconnecting rooms



**Queens Court, Cairns**

**Parking:**

There is no designated accessible parking bay at the front entrance of Queens Court, although there are parking areas that can be used both in the front and at the side, outside the Studio apartment. Neither is undercover. There is an undercover drop off area at the front of Queens Court.



### **Entry into reception**

The entry into reception is through double manual door, measuring 1580 mm in total, with no threshold.

The reception counter does not have a lowered section for people using wheel chairs but staff is willing to assist the guests.

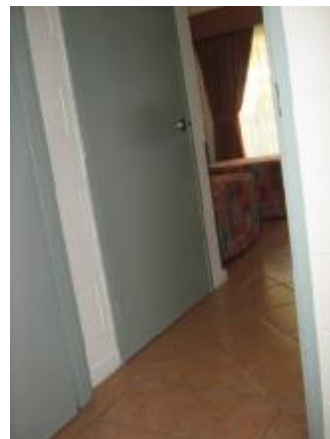
### **Access to public areas**

The whole establishment has good level access into all areas, but the pool has no special access into the pool itself.



### **Accommodation:**

There are two accessible guest rooms, one being a room with two single beds. This room is called superior and is three and a half stars. The other is a studio apartment and is 4 star. They are quite different. The following is the information about the superior room.



It has level access with no steps or sills. The door width is 857 mm, fitted with D style handles and require slight force to open. This room is configured with two single beds (see photo). Under bed clearance is 150mm and the height to the top of bed is 540mm. The widest accessible point from the side of the bed is 660mm.



There is no accessible table or desk in this room. There is a coffee/tea making facility microwave oven and small bar fridge provided. The TV and AC can be controlled by remote from the bed. The height of the cupboard clothes rail is very high at 1850mm above the floor.



### **Sanitary Facilities:**

Entry into the accessible shower and toilet is through an 875mm door. The facility is a combined toilet and shower with a dimension of 2400mm long by 1900mm wide.



There is a drop down shower seat provided with a height of 450mm, width of 875mm and depth of 365mm.

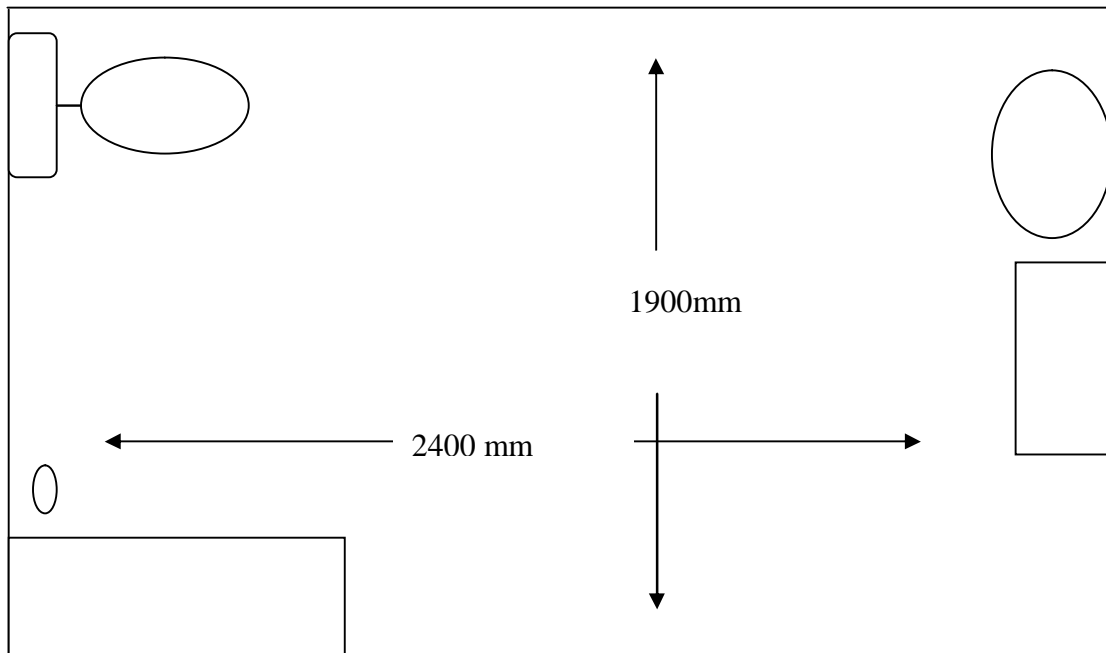
Vertical and horizontal grab rails are fitted to the shower and toilet at 810 mm high (see photo)

A flick mix tap is provided and is easily reachable when sitting in front of the shower.



The toilet is mounted 420mm from wall to centre of pan. The seat height is 455mm from floor to top of seat. The sink is located 1100mm from the front of the pan.

Clearance to the under side of the sink is 650mm with a top height of 770mm. The base of the mirror from floor is 975mm.







The second apartment is the studio apartment and is classed as 4 star and has a foyer with a lounge and two computers outside. (see photo)



The room is configured with a king size bed (see photo). Under bed clearance is 80mm and the height to the top of bed is 585mm. The widest accessible point from the side of the bed is 1260mm.



There is an accessible table in this room with a top height of 750mm and a height from floor to the underside of 715mm. This is a self contained apartment with a stove, microwave, fridge and sink, although the microwave is too high to be accessible.

The TV and AC can be controlled by remote from the bed.

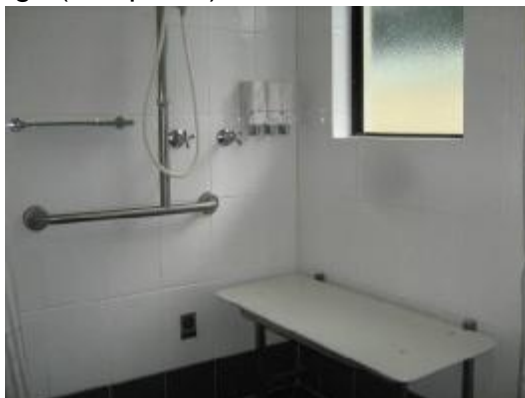
The height of the cupboard clothes rail is very high at 1850mm above the floor.

## Sanitary Facilities:

Entry into the accessible shower and toilet is through an 800mm door. The facility is a combined toilet and shower with a dimension of 2380mm long by 1880mm wide. There is a drop down shower seat provided with a height of 470mm, width of 990mm and depth of 410mm.



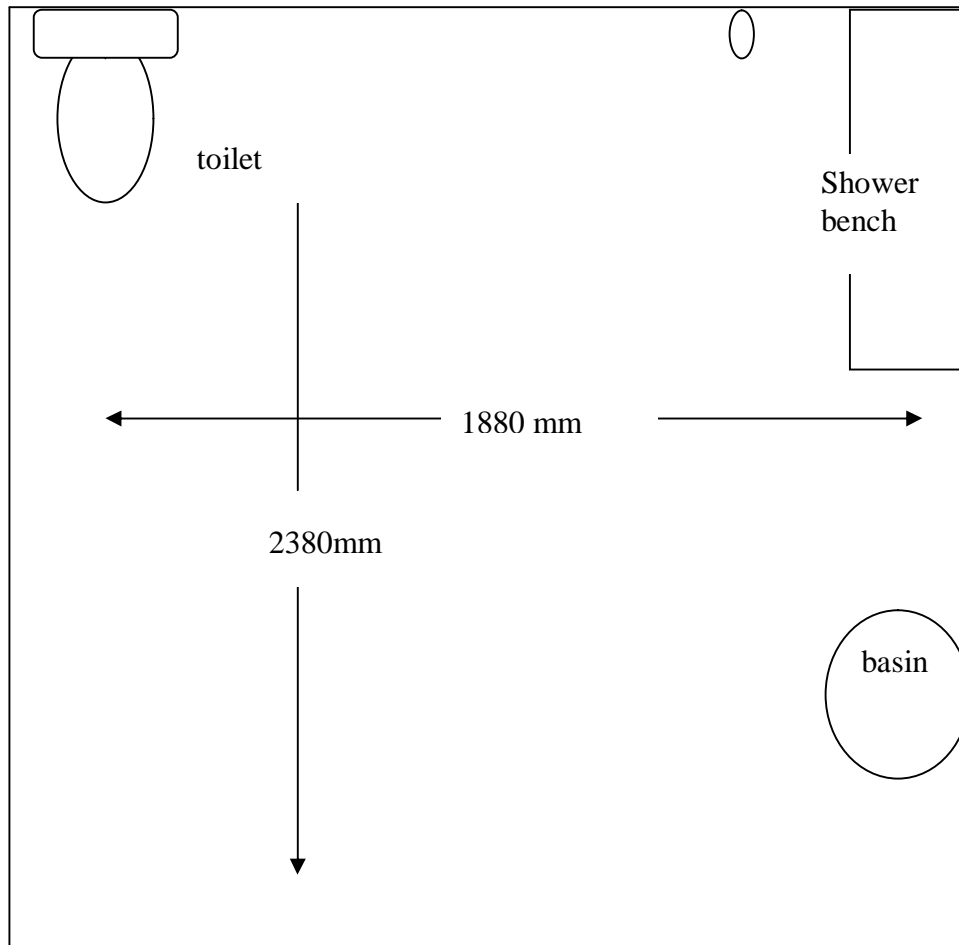
Vertical and horizontal grab rails are fitted to the shower and toilet at 810 mm high (see photo)



A flick mix tap is provided and is easily reachable when sitting in front of the shower.

The toilet is mounted 460mm from wall to centre of pan. The seat height is 470mm from floor to top of seat.

Clearance to the under side of the sink is 630mm with a top height of 790mm. The base of the mirror from floor is 910mm.



There is a dining room for evening meals and a breakfast area.